

Physics  
UNIT: 4PH1  
Science (Double Award) 4SD0  
PAPER: 1P

Wednesday 22 May 2024 – Morning

Time: 2 hours

Diagram Booklet

THIS DIAGRAM BOOKLET MUST BE RETURNED WITH THE QUESTION PAPER AT THE END OF THE EXAMINATION.

In the boxes below, write your name, centre number and candidate number.

Surname					
Other names					
Centre Number					
Candidate Number					

## **INSTRUCTIONS**

**There may be spare copies of some diagrams in case you need them.**

## **CONTENTS**

### **Page**

<b>4</b>	<b>Question 1(a) – Blank</b>
<b>5</b>	<b>Question 3</b>
<b>6</b>	<b>Question 4(a)</b>
<b>7</b>	<b>Question 5(a)</b>
<b>8</b>	<b>Question 5(b)</b>
<b>9</b>	<b>Question 5(b)(i)</b>
<b>10</b>	<b>Question 6</b>
<b>11</b>	<b>Question 6(d)</b>
<b>12</b>	<b>Question 7</b>
<b>13</b>	<b>Question 8</b>
<b>14</b>	<b>Question 9(a)</b>
<b>15</b>	<b>Question 9(b)</b>
<b>16</b>	<b>Question 10</b>
<b>17</b>	<b>Question 10(c)</b>
<b>18</b>	<b>Question 10(c)(i)</b>
<b>19</b>	<b>Question 10(c)(ii)</b>
<b>20</b>	<b>Question 11</b>
<b>21</b>	<b>Question 11(c)</b>
<b>22</b>	<b>Question 12</b>

### **Spare Copies**

<b>23</b>	<b>Question 1(a) – Blank</b>
<b>24</b>	<b>Question 4(a)</b>

**(continued on the next page)**

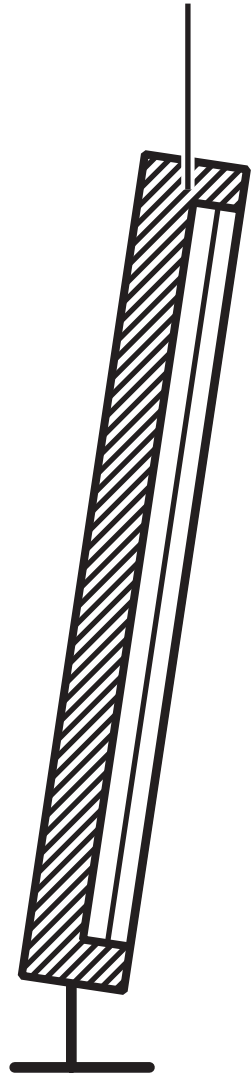
**CONTENTS continued.**

<b>25</b>	<b>Question 5(a)</b>
<b>26</b>	<b>Question 6</b>
<b>27</b>	<b>Question 6(d)</b>
<b>28</b>	<b>Question 8</b>
<b>29</b>	<b>Question 10(c)(ii)</b>
<b>30</b>	<b>Question 12</b>

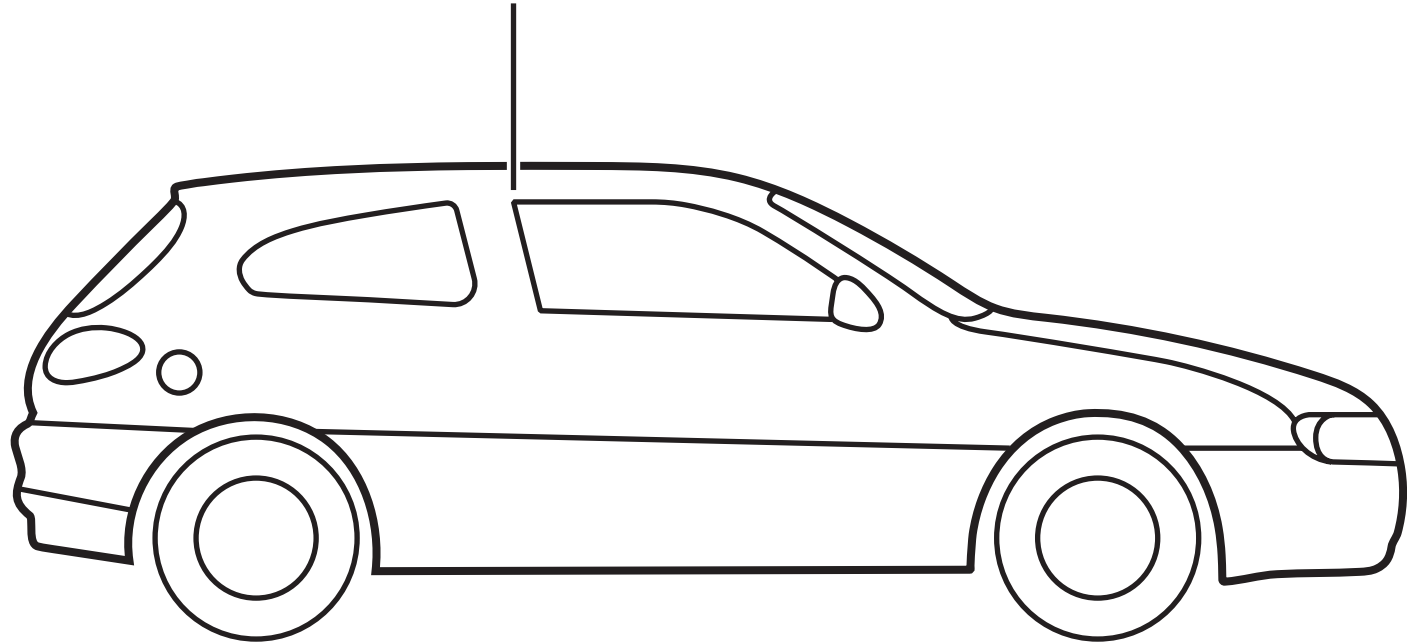
## Question 1(a) – Blank

### Question 3

infrared heating lamps



car



Question 4(a)

Energy store	Increases	Decreases	Stays the same
chemical			
gravitational potential			
nuclear			
thermal			

### Question 5(a)



## Question 5(b)

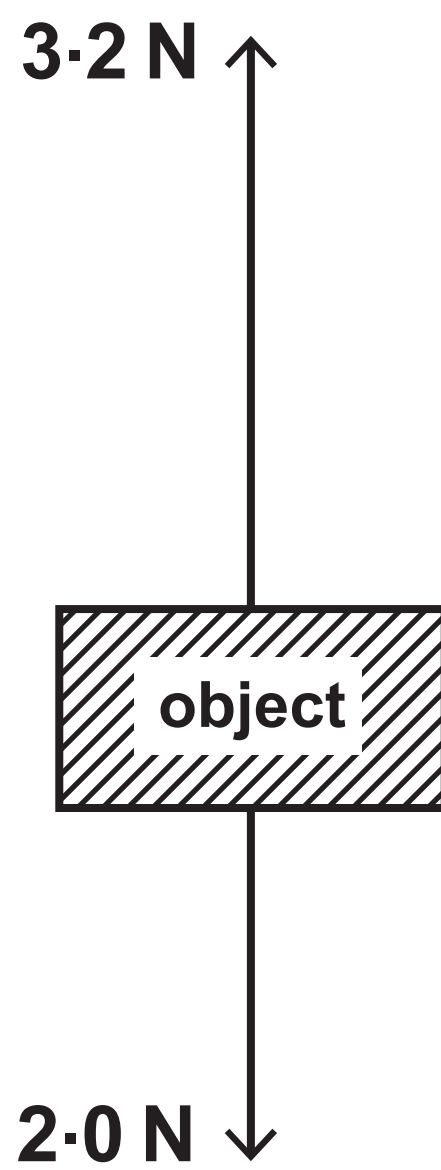
DIAGRAM 1

support

spring

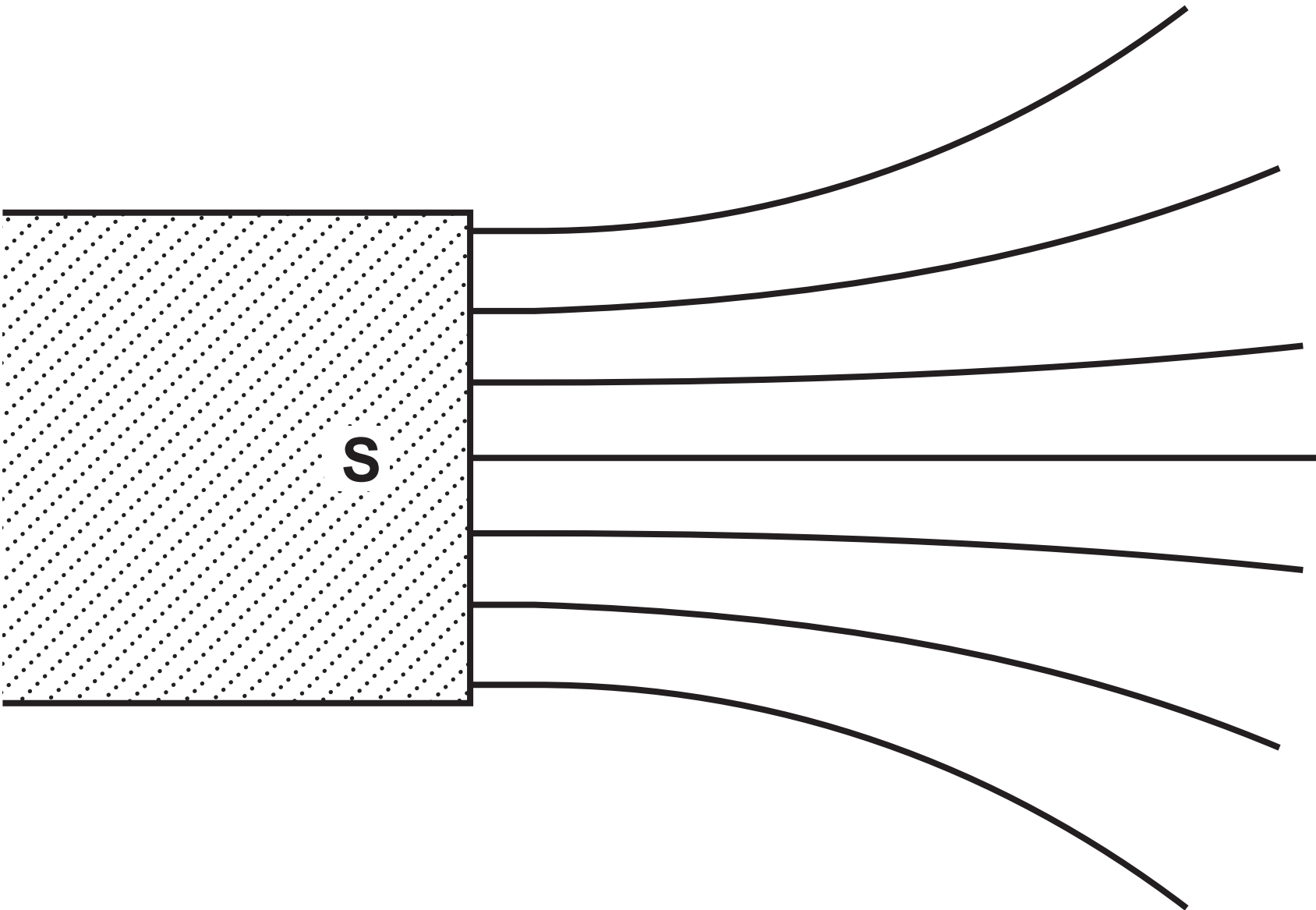




**Question 5(b)(i)****DIAGRAM 2**

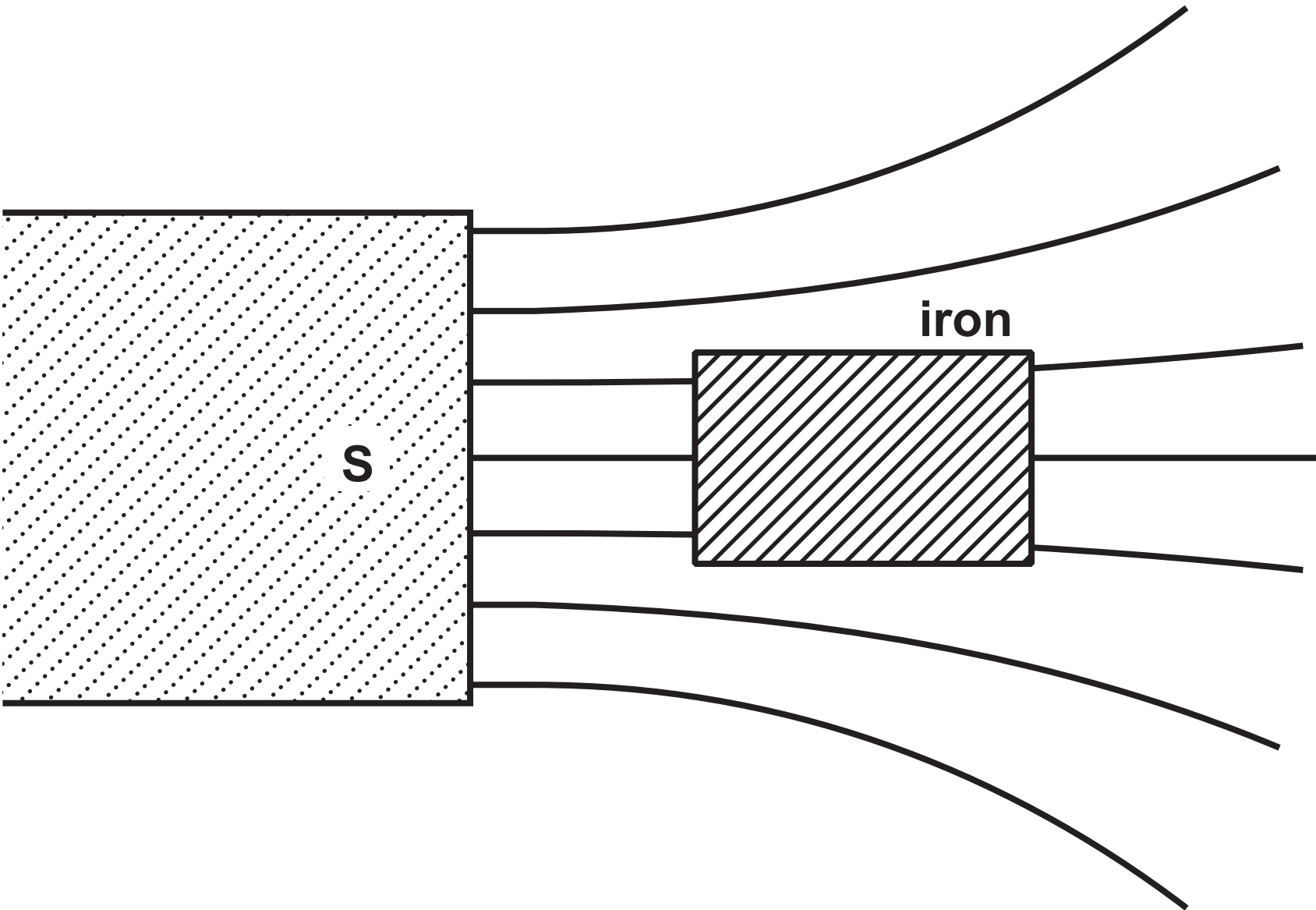
Question 6

DIAGRAM 1

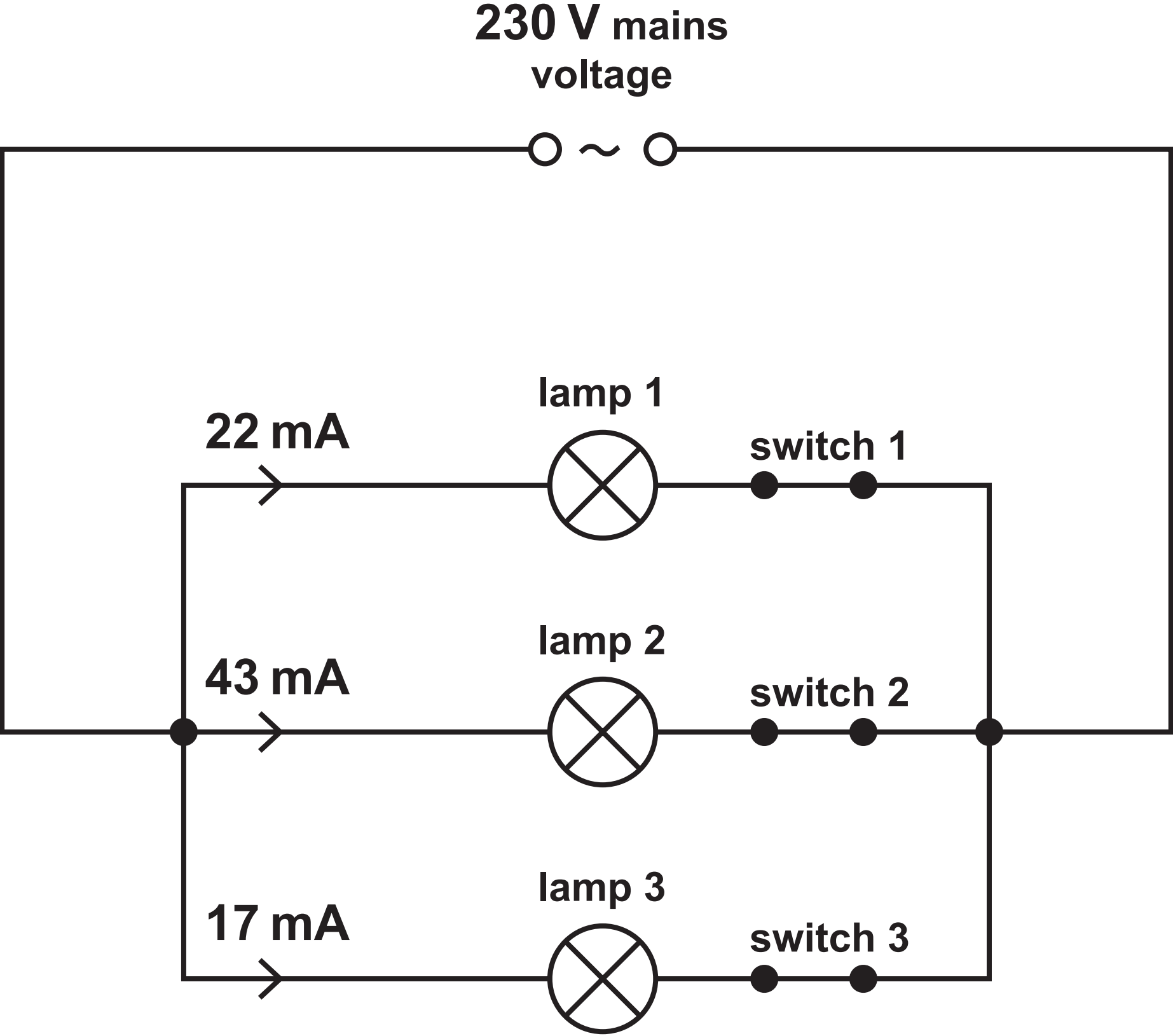


Question 6(d)

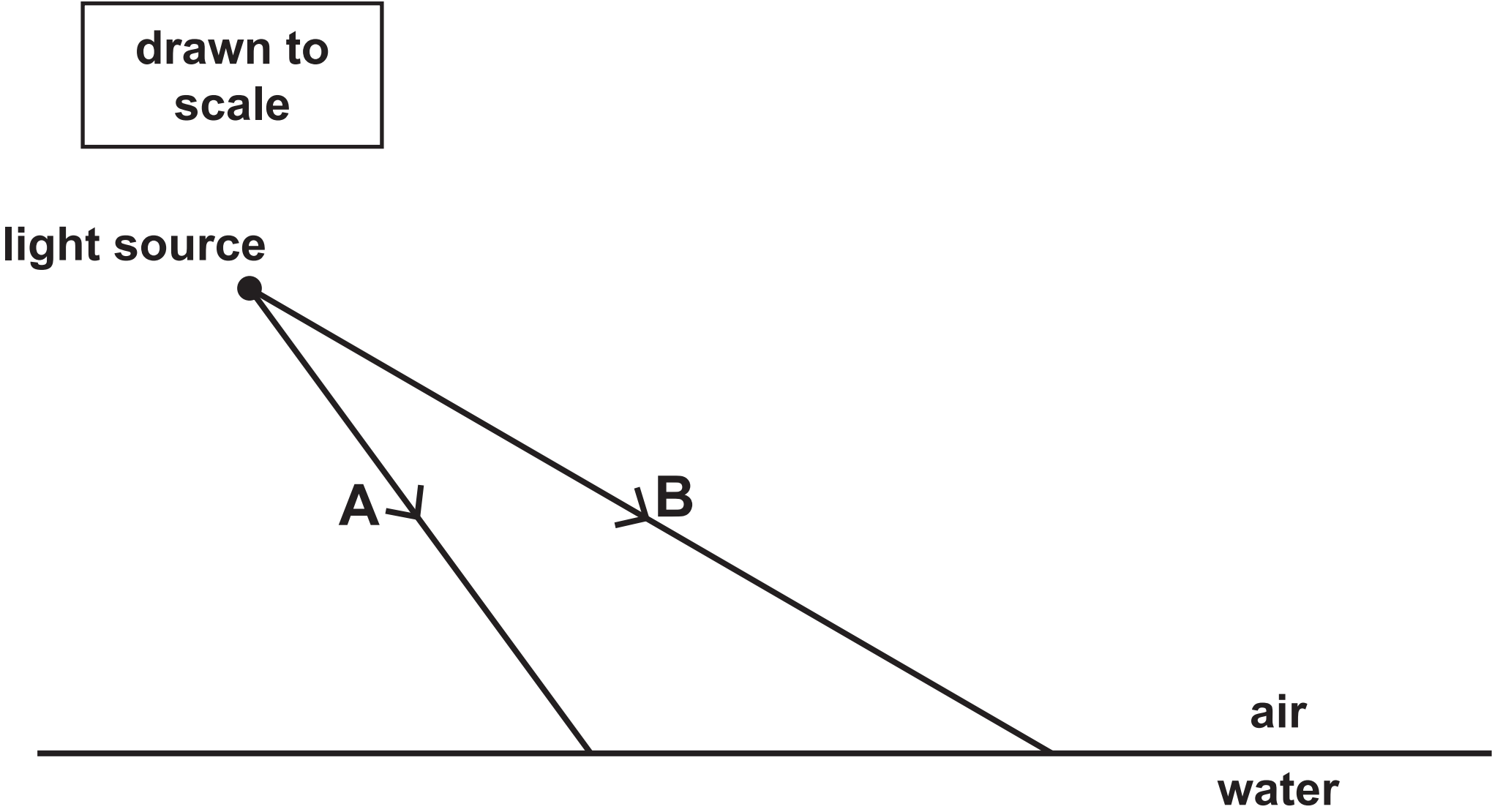
DIAGRAM 2



Question 7

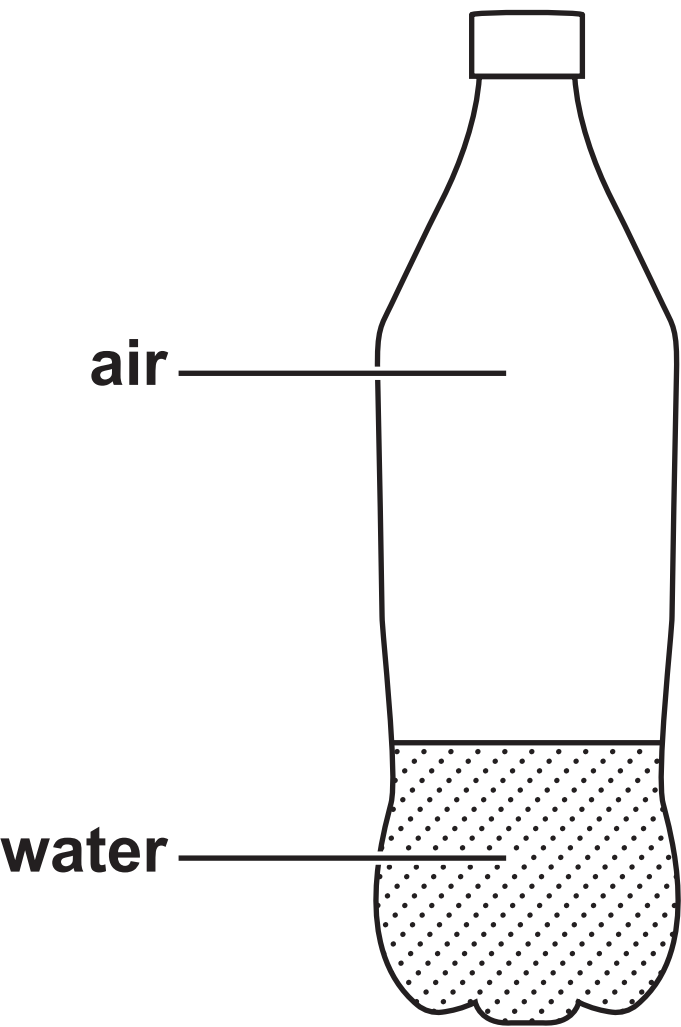


Question 8



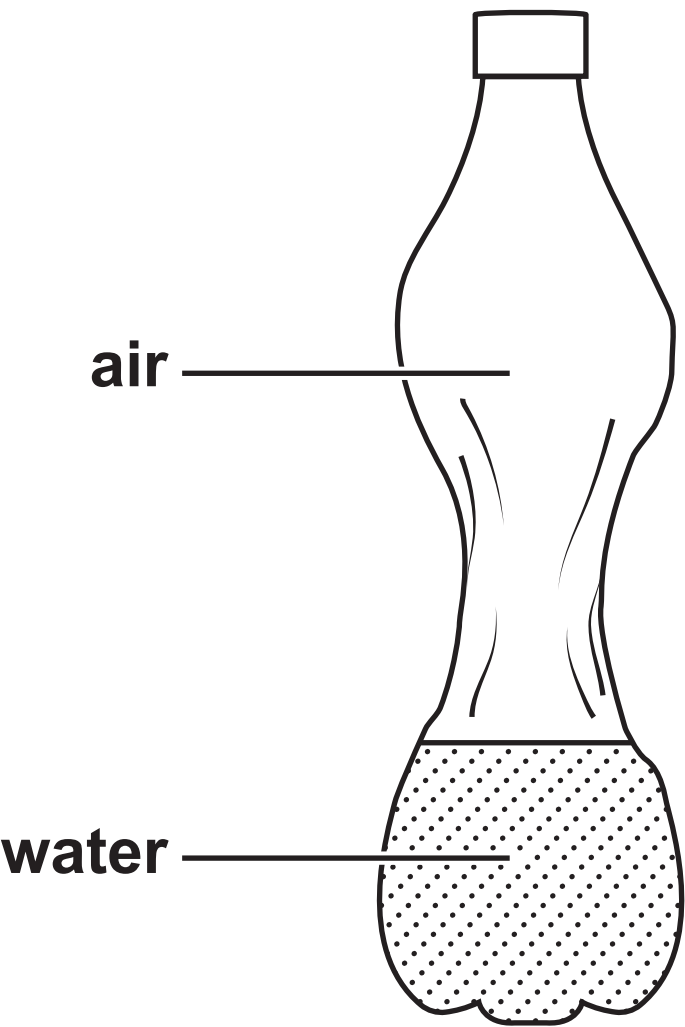
Question 9(a)

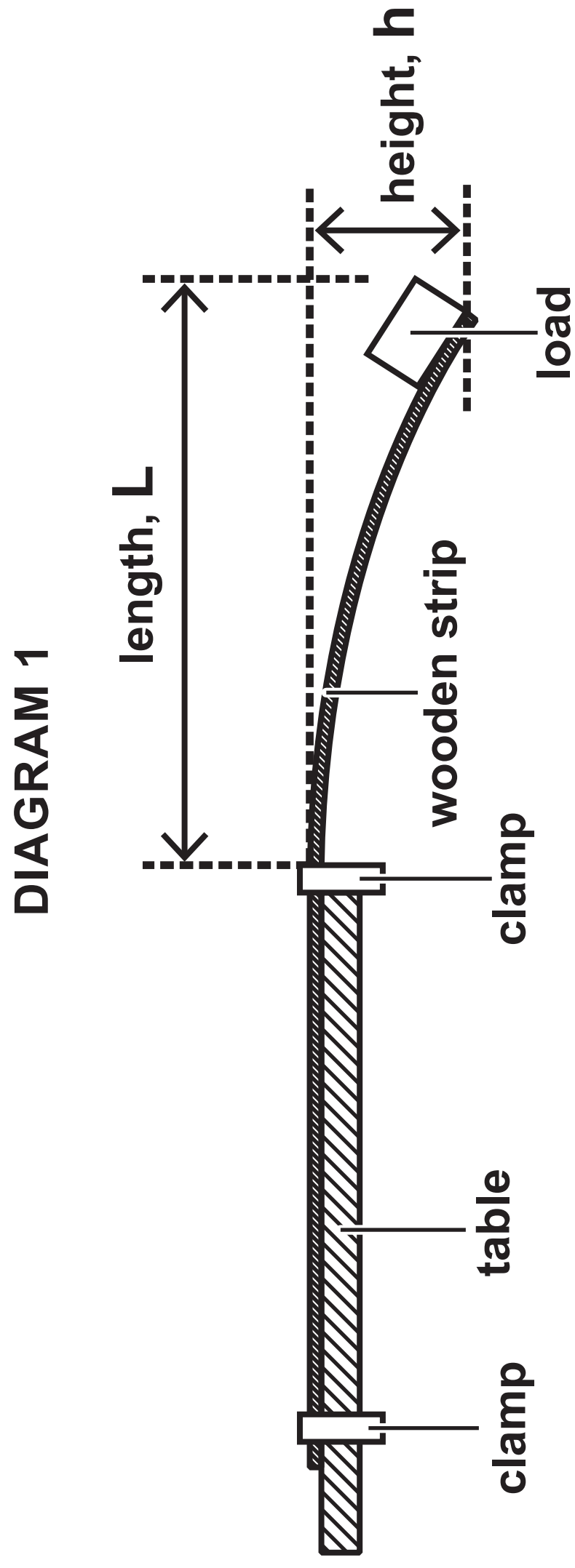
DIAGRAM 1



Question 9(b)

DIAGRAM 2





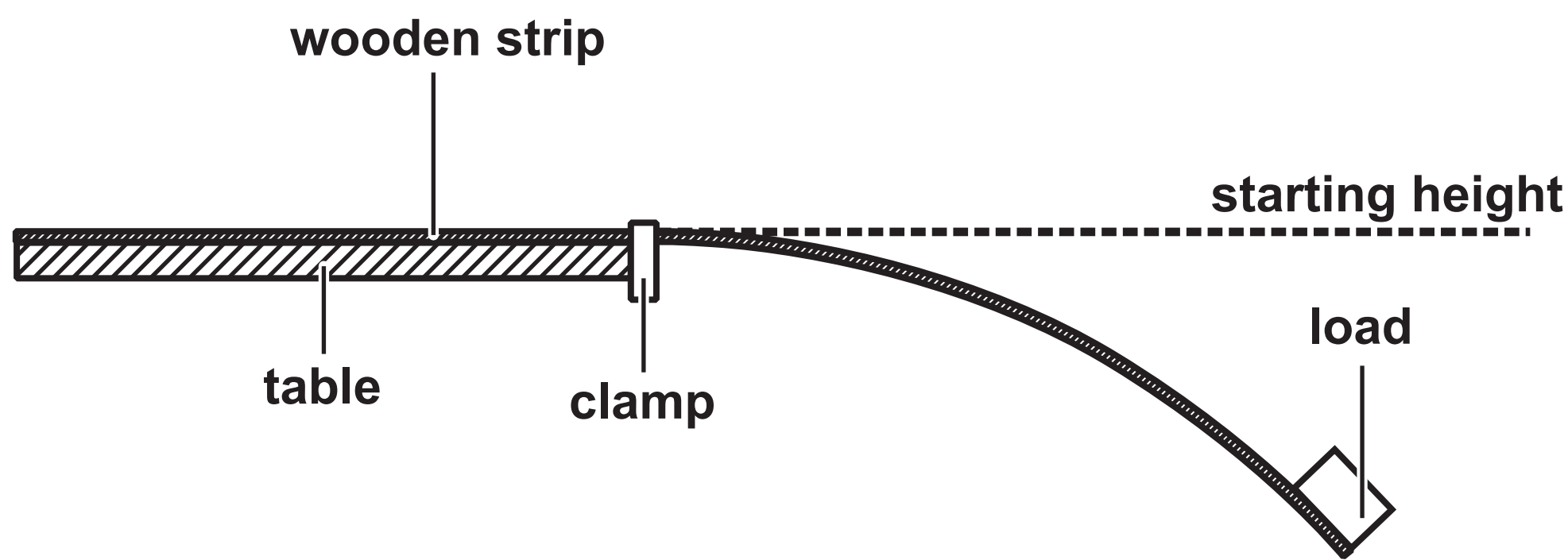


Question 10(c)

Length (L) in cm	Height (h) in cm
20	2
40	8
60	18
80	
100	53
120	71

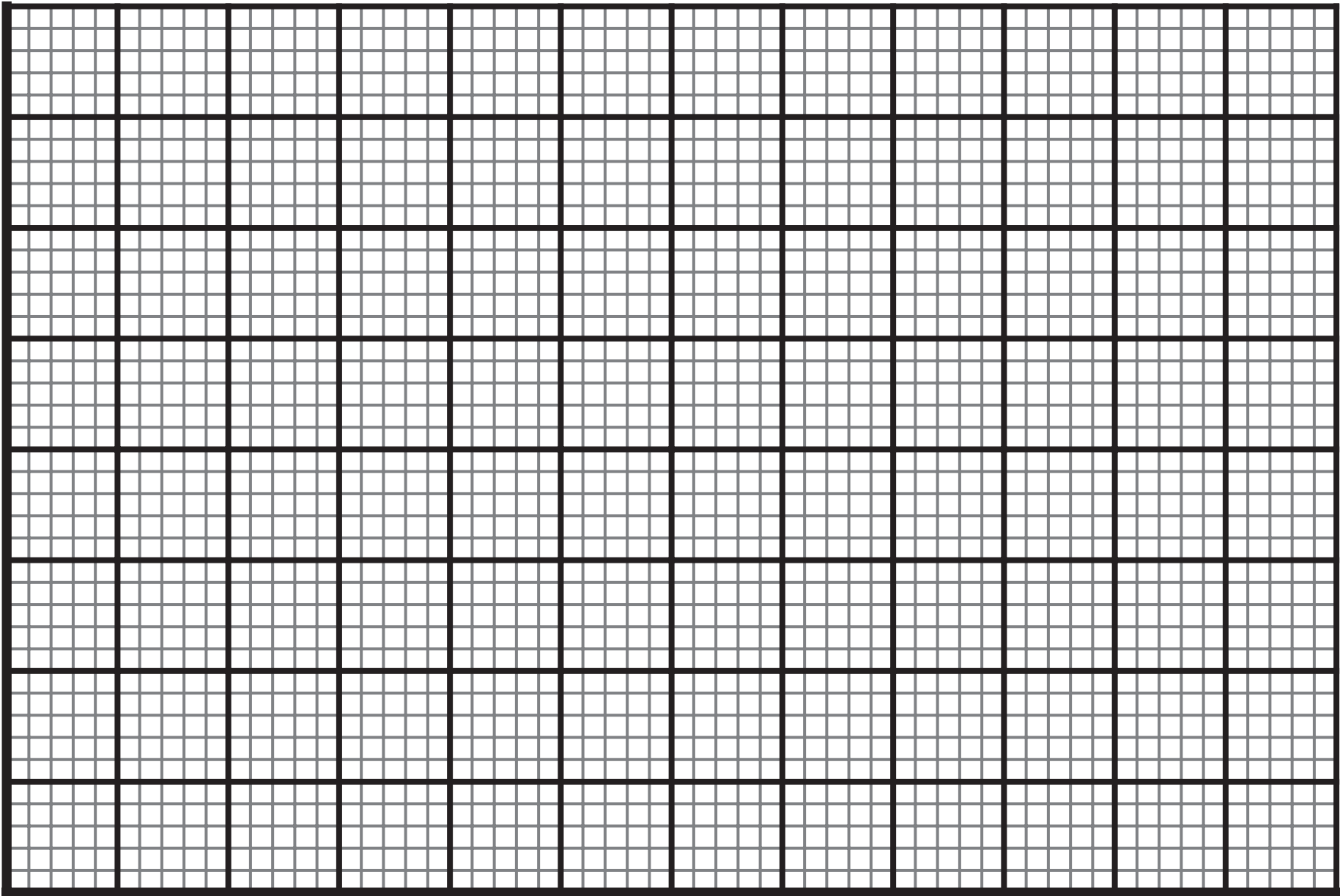
Question 10(c)(i)

DIAGRAM 2



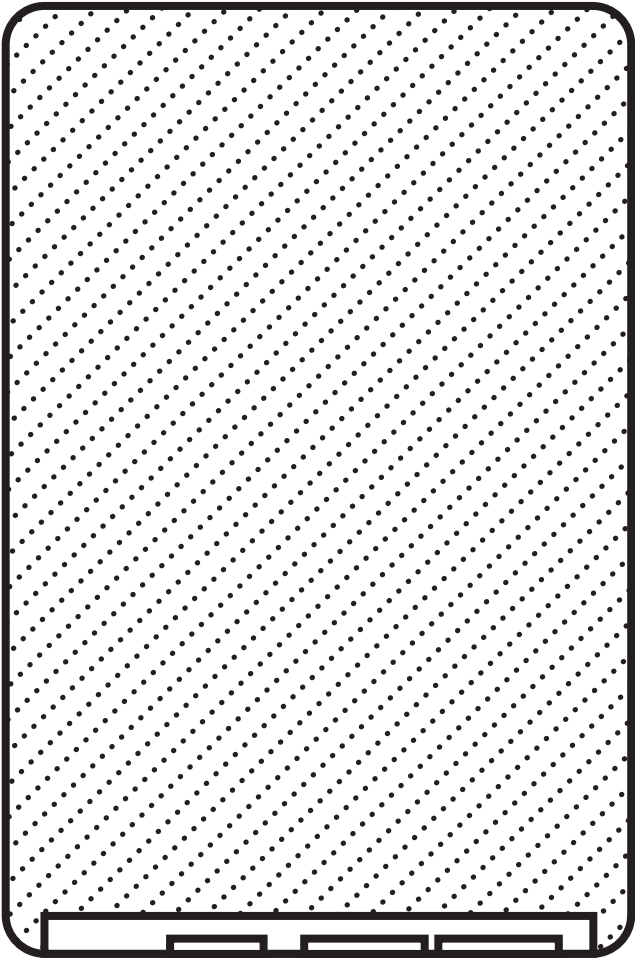
Question 10(c)(ii)

Height (h) in cm



Length (L) in cm

Question 11

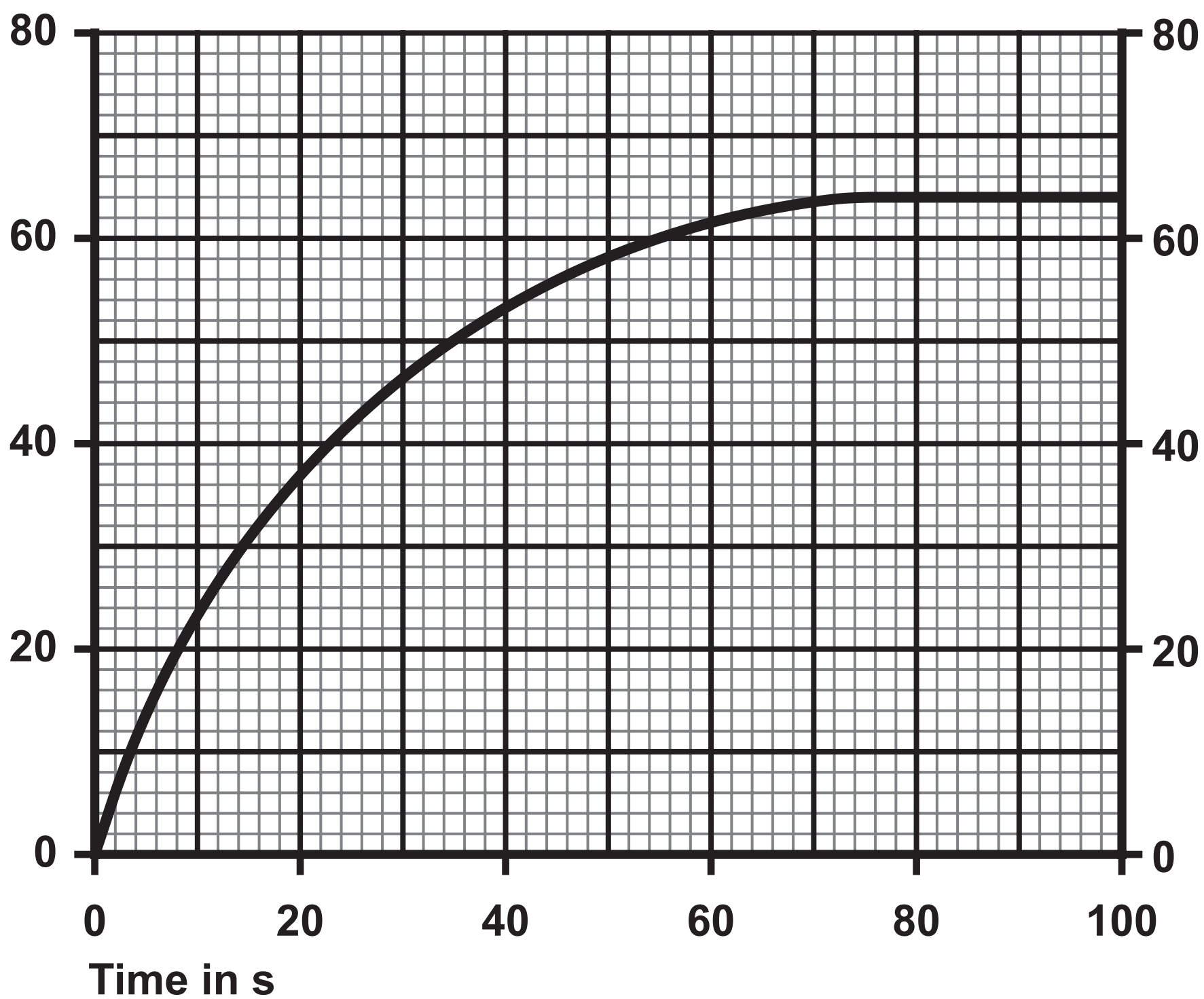


Question 11(c)

Electronic device	Charge stored in Ah	Frequency of recharging
A	2·4	once every day
B	4·2	once during the week
C	6·8	once during the week

## Question 12

Velocity in m / s



## Question 1(a) – Blank

Question 4(a)

Energy store	Increases	Decreases	Stays the same
chemical			
gravitational potential			
nuclear			
thermal			

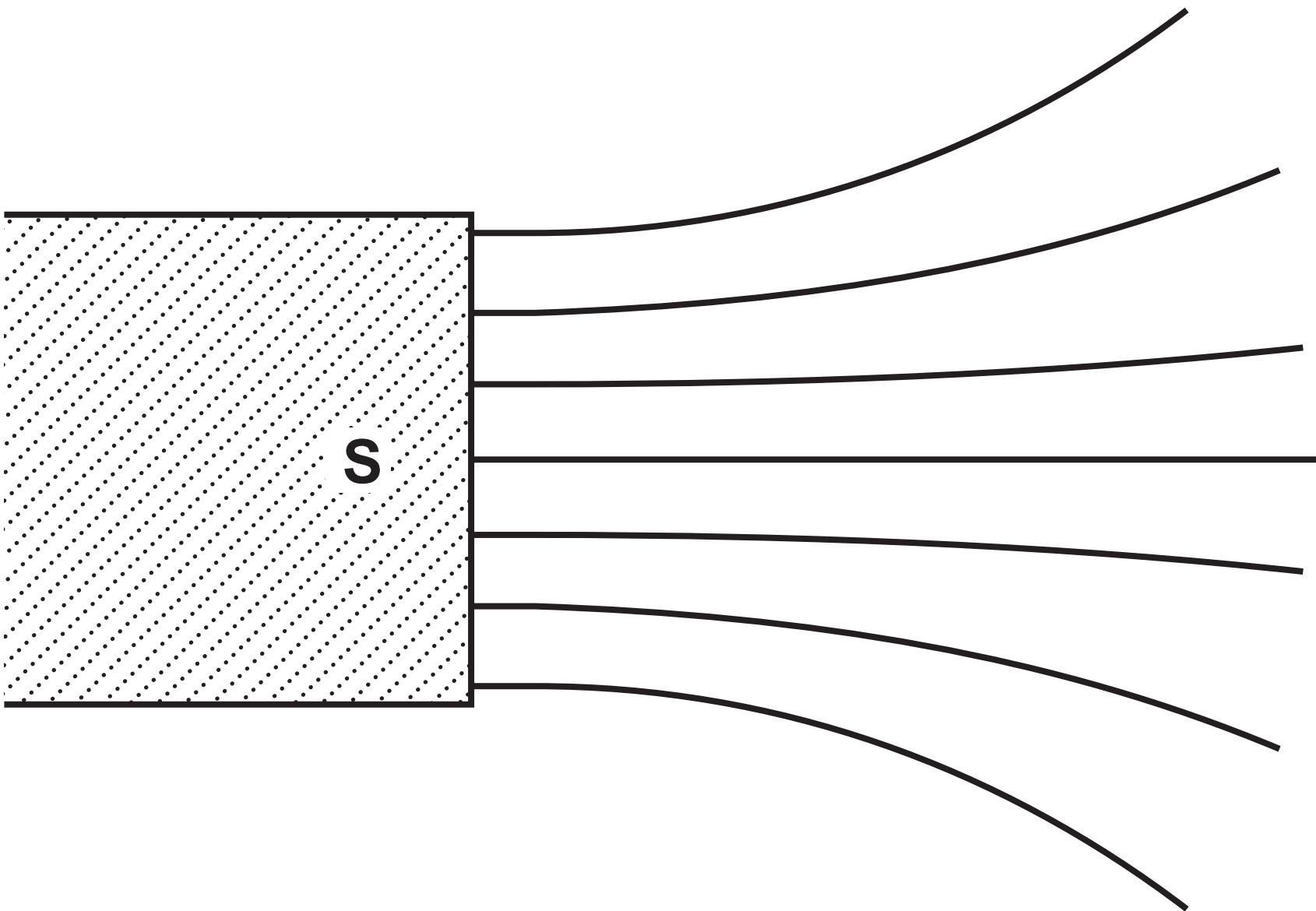


## Question 5(a)



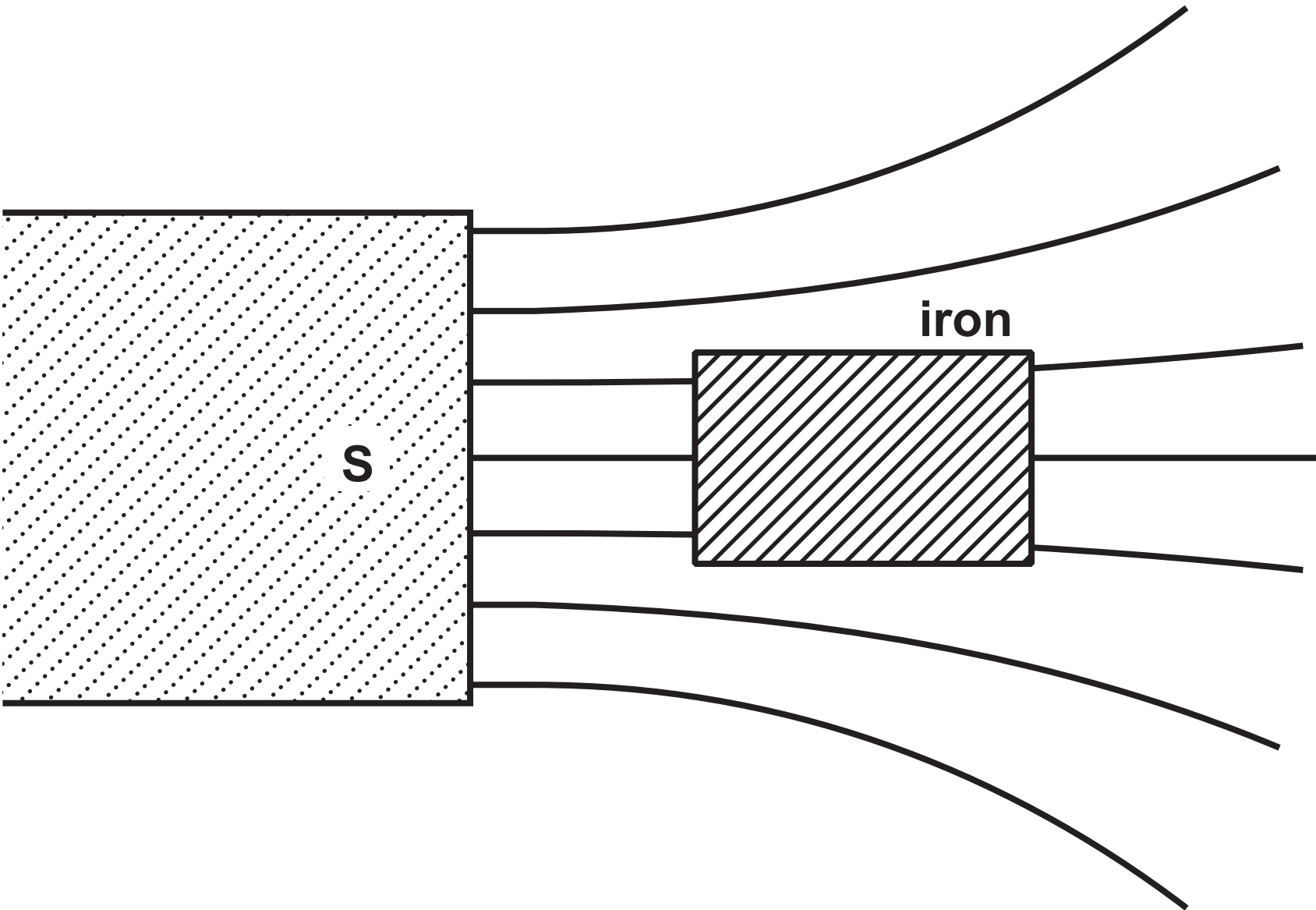
Question 6

DIAGRAM 1

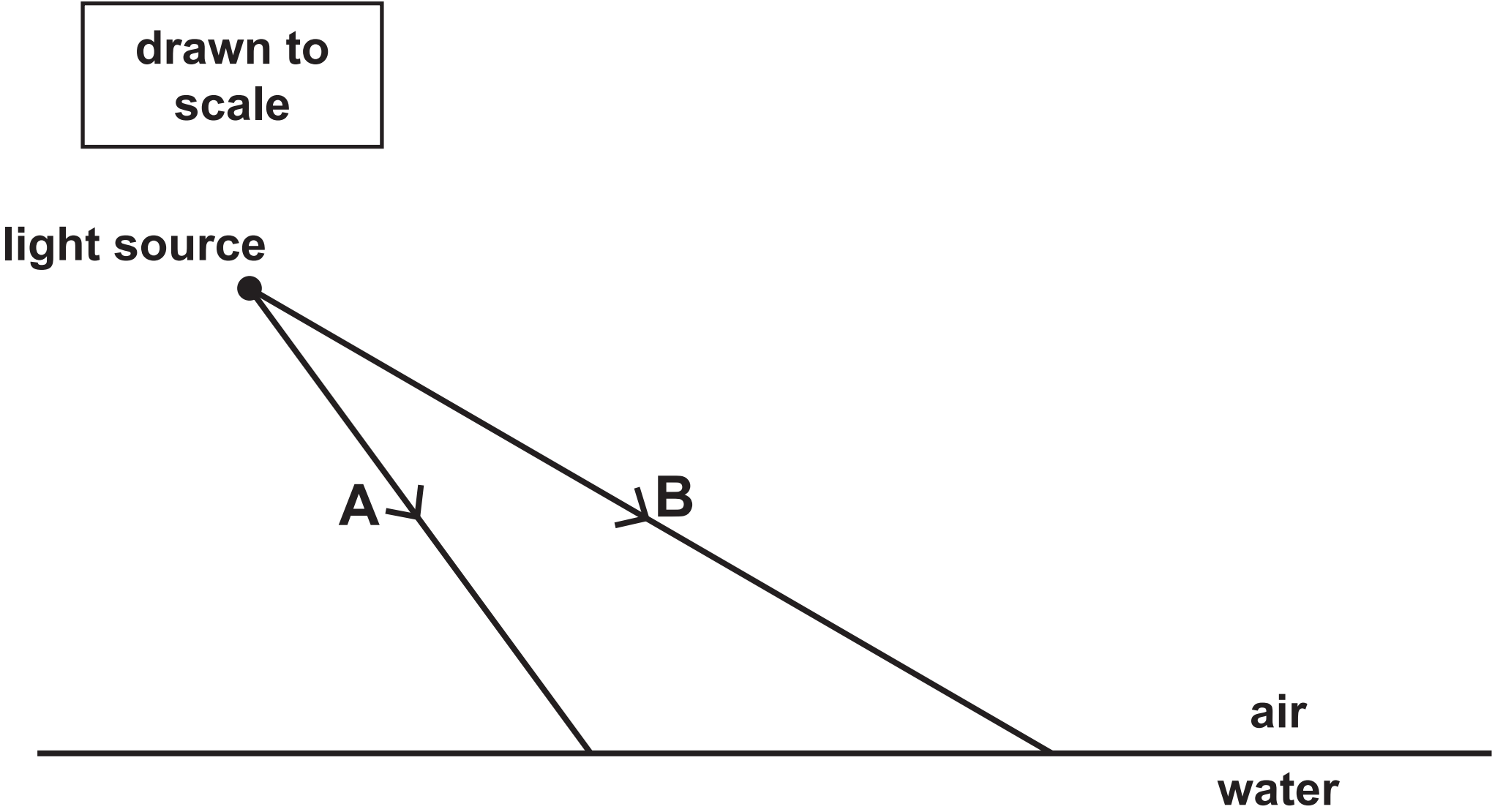


Question 6(d)

DIAGRAM 2

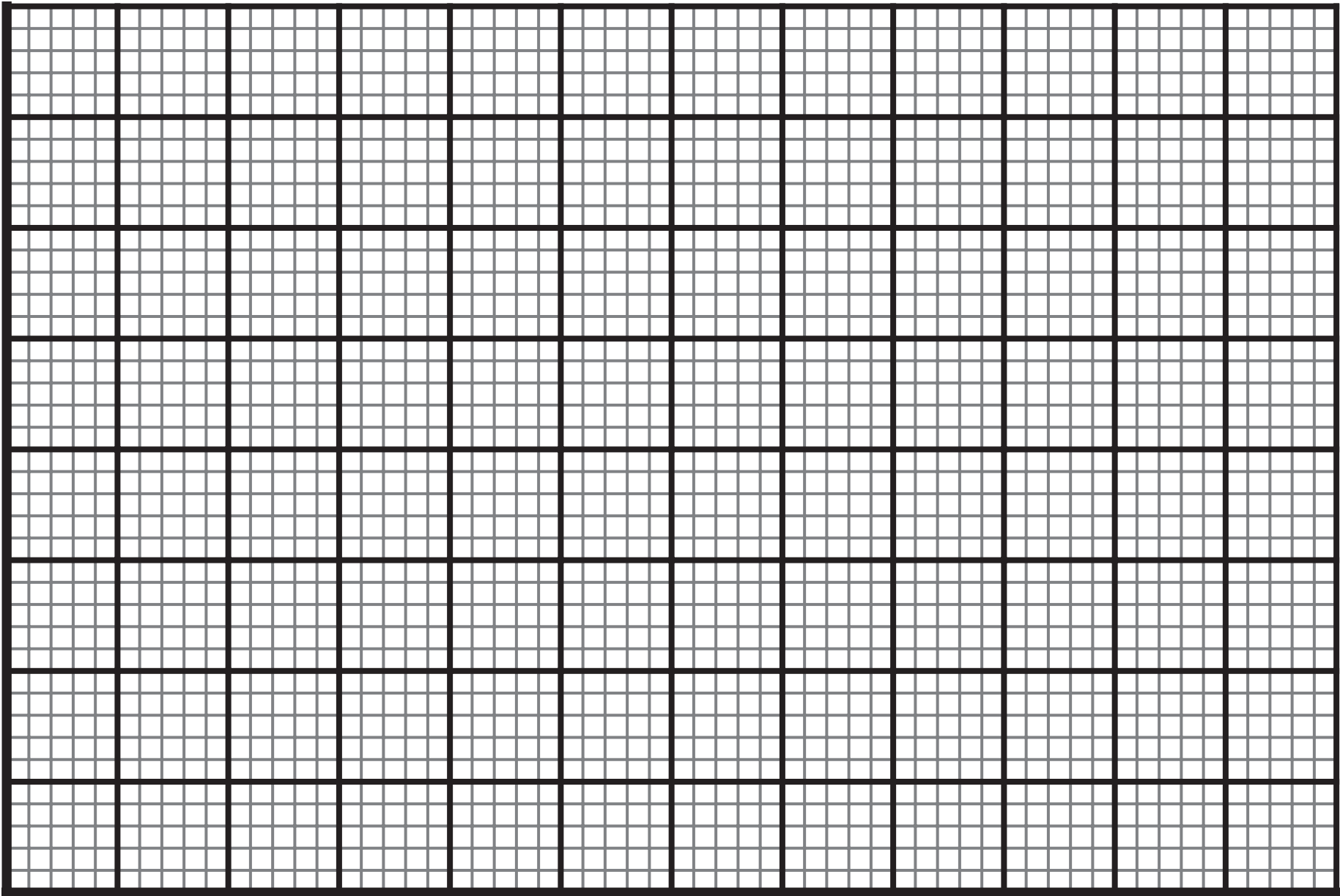


Question 8



Question 10(c)(ii)

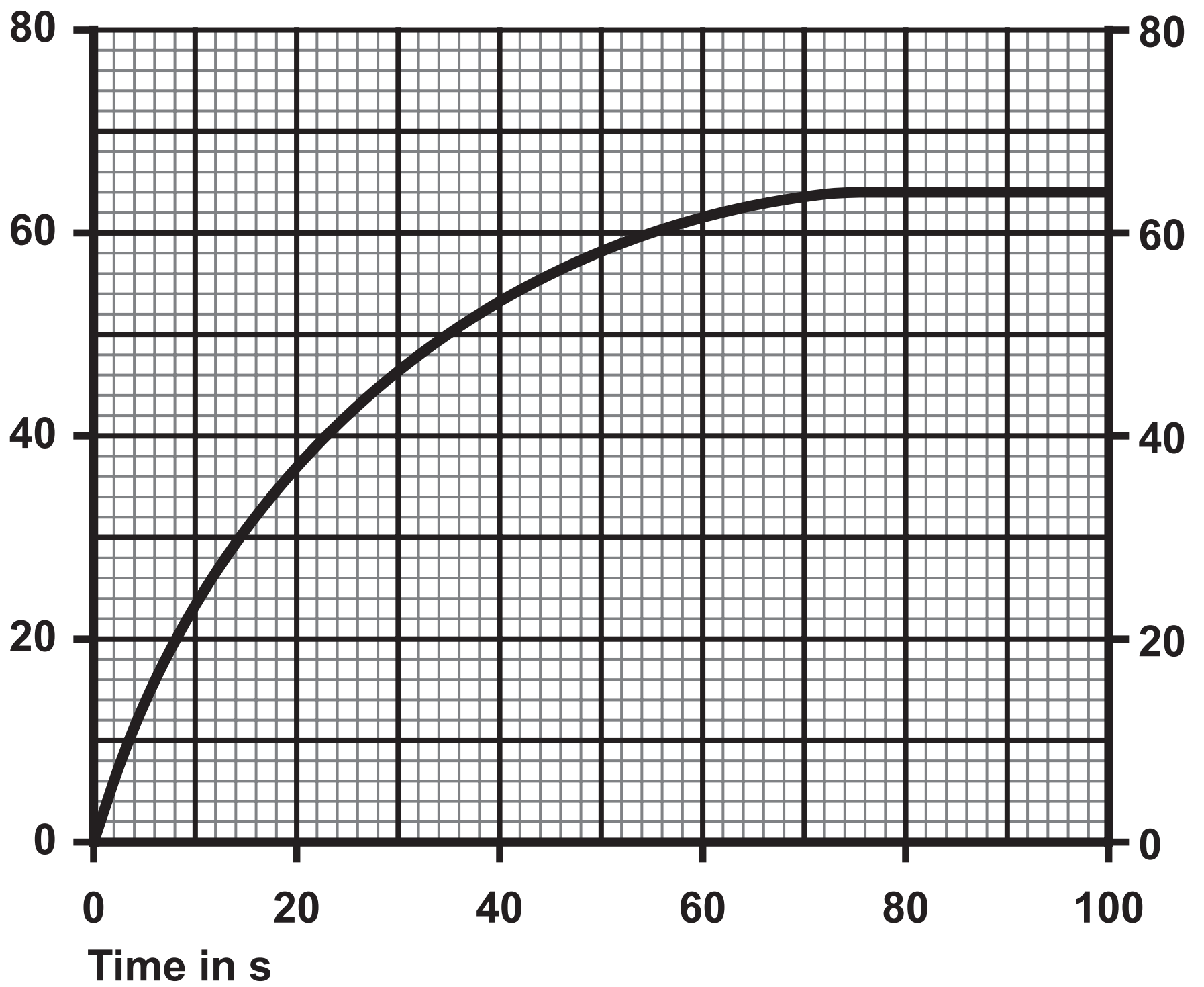
Height (h) in cm



Length (L) in cm

## Question 12

Velocity in m / s



## Source information

### Question 3

Source: adapted from © Dmitry Kalinovsky/Shutterstock